

Программное обеспечение Stonex

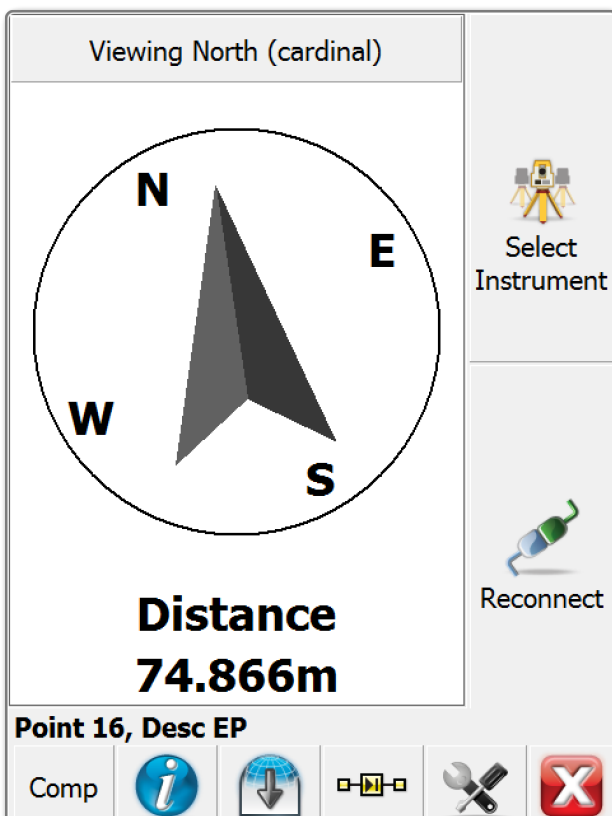
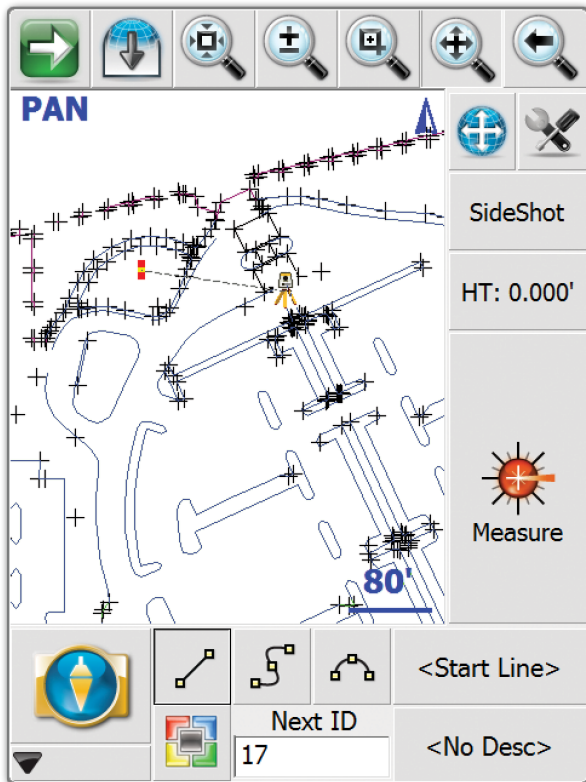
По вопросам продаж и поддержки обращайтесь:

Архангельск (8182)63-90-72
Брянск (4832)59-03-52
Вологда (8172)26-41-59
Иваново (4932)77-34-06
Калининград (4012)72-03-81
Киров (8332)68-02-04
Курск (4712)77-13-04
Москва (495)268-04-70
Нижний Новгород (831)429-08-12
Орел (4862)44-53-42
Пермь (342)205-81-47
Самара (846)206-03-16
Смоленск (4812)29-41-54
Тверь (4822)63-31-35
Тюмень (3452)66-21-18
Челябинск (351)202-03-61

Астана +7(7172)727-132
Владивосток (423)249-28-31
Воронеж (473)204-51-73
Ижевск (3412)26-03-58
Калуга (4842)92-23-67
Краснодар (861)203-40-90
Липецк (4742)52-20-81
Мурманск (8152)59-64-93
Новокузнецк (3843)20-46-81
Оренбург (3532)37-68-04
Ростов-на-Дону (863)308-18-15
Санкт-Петербург (812)309-46-40
Сочи (862)225-72-31
Томск (3822)98-41-53
Ульяновск (8422)24-23-59
Череповец (8202)49-02-64

Белгород (4722)40-23-64
Волгоград (844)278-03-48
Екатеринбург (343)384-55-89
Казань (843)206-01-48
Кемерово (3842)65-04-62
Красноярск (391)204-63-61
Магнитогорск (3519)55-03-13
Набережные Челны (8552)20-53-41
Новосибирск (383)227-86-73
Пенза (8412)22-31-16
Рязань (4912)46-61-64
Саратов (845)249-38-78
Ставрополь (8652)20-65-13
Тула (4872)74-02-29
Уфа (347)229-48-12
Ярославль (4852)69-52-93

FieldGenius Software



What sets STONEX FieldGenius apart from the competition?

- **Code-free linework:** Linework is created automatically without entering codes and is instantly displayed, eliminating the need for a separate sketch. No need to connect the dots back at the office.
- **Advanced display with high-def graphics and intuitive interface:** STONEX FieldGenius is laid out with logical icons, customizable toolbars, smart objects and easy to use GPS and total station controls.
- **Easy stakeout:** Choose between graphical compass, grid, and map staking modes to easily stake out points. Viewing direction can be adjusted based on your preferences.
- **Works on more displays than ever:** High-definition, standard (or legacy) definition, widescreen, portrait, tablet-style - you name it.
- **Productivity tasks:** Customize your data collector by assigning commands to your keypad keys.
- **Calculating tools:** Access the built in RPN calculator from any edit field.
- **Plus advanced roading, surfacing, slope staking, smart-points, DXF & LandXML import/ export and full robotic and GPS support.** STONEX FieldGenius is the choice of organizations that value productivity.

CUBE T Software



STONEX CUBE T, the newest Windows™ PC software system by STONEX, is the result of the integration of a powerful Mapping & Topographic CAD with an effective Field data collector for GPS RTK.

Data from Total Stations can be imported and mixed in a job file, and an unique field book will be created.

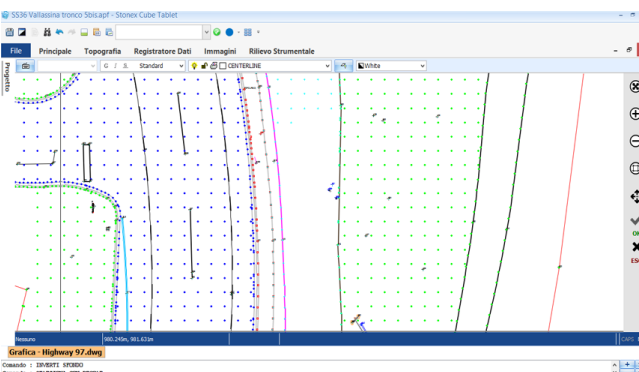
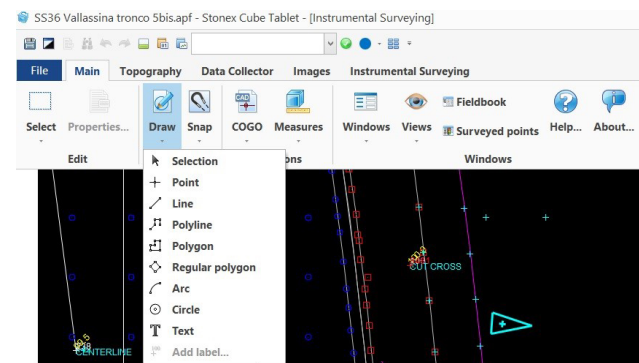
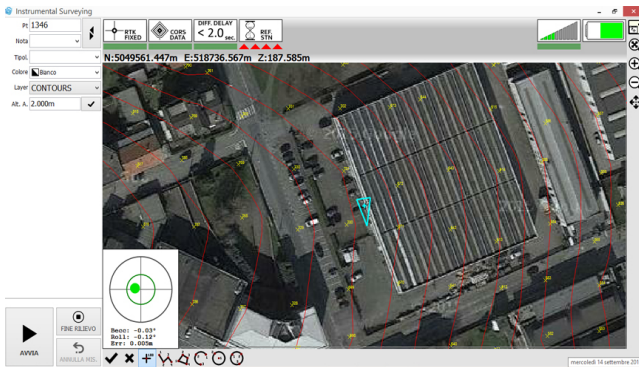
Mostly dedicated to the Users of STONEX GNSS, CUBE T is open to manage tenth of total stations data format and the universal NMEA data protocol, to allow the Users of non Stonex GPS to enjoy the functionalities of CUBE T.

CUBE T gives a complete set of functions used to collect data in RTK - Base and Rover and GPS Networks environments – Static and Fast Static modes: the total control of the receiver guarantees a seamless field work and a real self confidence

Any field operation – data collection, COGO or staking out - are so fluent that your Surveyor Team will be happy to work with a STONEX Survey system!

GeoTiff and other raster images can be imported, georeferenced and used as background during a field work.

The wide range of Import/Export formats as DXF, DXB, DWG, SHP, Land XML, custom ASCII.... make CUBE T one of the most open mapping systems



GeoGis Software

Stonex GeoGis is a powerful yet simple software solution for the collection of high quality feature and position data for GIS update and maintenance. GeoGis software provides simple and efficient workflows to capture high quality data quickly and easily. GeoGis is an option that can be embedded into handheld GIS systems.

Description

GeoGis software consists of two integrated modules: GeoGis Mobile for the field work and GeoGis Office for desktop elaboration. With GeoGis you never have to worry about which application to use to manage and transfer your data. With GeoGis software the workflow is straight and simple, from the field to the office and vice versa.

Stonex GeoGis software makes the field data collection fast and easy to do thanks to a full set of field-designed features, such as graphical map display, clear icon toolbar and useful calculation tools. Stonex GeoGis software also makes it easy to incorporate digital photos into the data collection workflow using an handheld with integrated digital camera. Field workers can take and preview photos, attaching them to the features and create complete set of data for many different purposes.



With Stonex GeoGis software you can create custom data attributes and use them to assign values to the assets. Data forms can be pre-compiled basing on previously entered attribute values for maximum data collection efficiency.

Assets can be viewed on the intuitive graphical display, overlapped with raster and vector backgrounds, resulting in increased productivity and creating a more dynamic field worker experience. Thanks to cellular and Wi-Fi capability GeoGis software can display online maps such as Google Maps, expanding the ability to find visual reference points anywhere on the planet. To inspect an asset, field workers can select the corresponding feature from the list or map, and the intuitive navigation tool of the GeoGis software will guide them to the asset's precise location.

With Stonex GeoGis software, you can collect data with the required level of accuracy, either in real time or after postprocessing. Stonex GeoGis software is the right solution for collecting and maintaining high quality GIS data.

Geogis is available in the following languages: English, Spanish, Czech, Italian, Hungarian, German, Portuguese, Russian and Uzbek (Turkish in progress).

CUBE WM Software

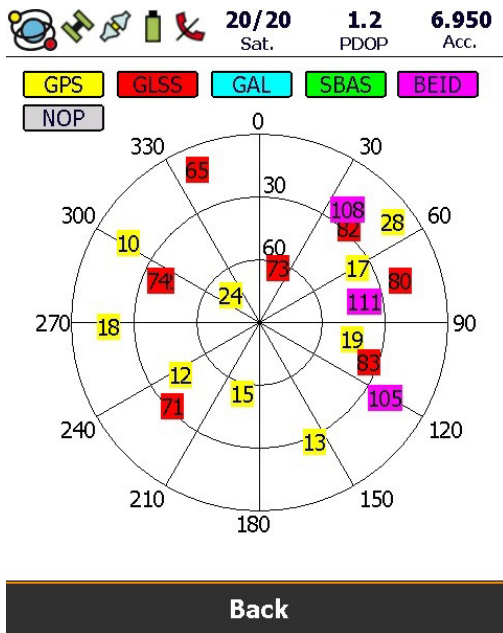


Description

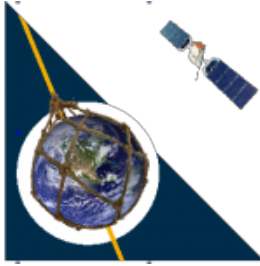
The CUBE development in coordination with the STONEX GPSs, a synergy that allows the introduction of several innovations. The workflow is smooth and friendly, and the possibility to store and retrieve removed jobs guarantees absolute data safety. The receiver's configuration is fast and simple, the data control is total as well as the management on the affecting receiver's parameters. Thanks to the very intuitive user interface, it is possible to easily fulfil the most complex tasks.

KEY FEATURES:

- Intuitive and user friendly interface
- Easy import and export in multiple formats thanks to the Stonex SDM desktop software
- Accessible menu configuration, simple and clear
- Import of raster georeferenced maps
- Storage of all data received by the instruments; no relevant information is lost
- Stonex S10 advanced features management: Tilt measurements and Electronic Bubble
- Complete management of coordinate transformation
- Database facility enhances the quantity and the quality of any jobs
- Assistant Mobile: the essential tool to configurate your GPS, now available in the field!
- Quick Base Mobile, the new tool to setup the GPS Base position and to set the radio links



GNSMART Software



GNSMART is based on procedures known as SMART-GNSS (Global Navigation Satellite System - State Monitoring And Representation Technique).
Description

It contains all the needed software components for monitoring and representing the GPS and GLONASS status. The monitoring is performed using SC200 stations, which positioned at a 50 km distance or more from each other, can provide complete coverage of the reference data allowing the real time position's determination with a centimeter accuracy. GNSS-SMART delivers the status monitoring of the whole system, including atmospheric regional effects, its representation and users' delivery for the purpose of determining the position with maximum precision, reliability and availability, both in real time than during the post-processing.

NTRIP Caster Software

Entirely designed and developed by the Stonex R & D department, NTRIP Caster is the ideal software for GNSS NTRIP network management.

Description

It's perfect integration with the SC200 makes NTRIP Caster the essential tool for everyday's work. NTRIP Caster gives the user an intuitive and powerful interface. It is an excellent server program to manage CORS stations in an autonomous and independent way; to transmit a single-base correction to multiple rover users, to manage them simultaneously and at any time in a reliable and efficient way.

NTRIP Caster offers the opportunity to the network administrator to monitor and limit users' access in real time. Combining with SC200 CORS the software allows users to download data through FTP server, to create a new network or to strengthen an existing one.

Reconstructor Software

To make more effective the use of the x300, Stonex, has developed a powerful and flexible software called Stonex Reconstructor.

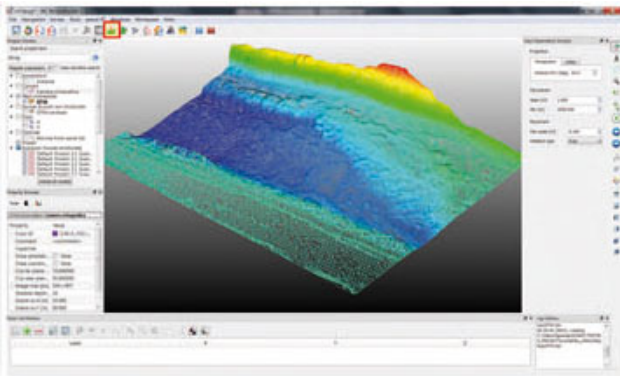
The Stonex Reconstructor software is based on the well known JRC 3D Reconstructor® technology. JRC 3D Reconstructor® is a software package worldwide appreciated for 3D laser scanner data processing in several application fields.

Description

The software – engineered and powered by Gexcel srl, under Stonex requirements - comes from the convergence of two experiences: the academic know-how of University studies and the applied research achievements of the European Joint Research Centre (JRC), located in Ispra (Italy). The software aim is to turn the latest scientific achievements in the Geomatics field into an hi-tech software for wide application areas. Thanks to the high knowledge, the software solutions developed in collaboration with Gexcel are able to satisfy different customer's requirements, from the construction and infrastructure application, until cultural heritage, architectural and mining / tunneling surveys. Stonex and Gexcel engineers have been working together to take advantage of the qualities of the X300 Stonex laser scanner. The basic software provided is the survey module, which is bundled with the X300. Other plug in are provided for specific functions such as construction and mining.

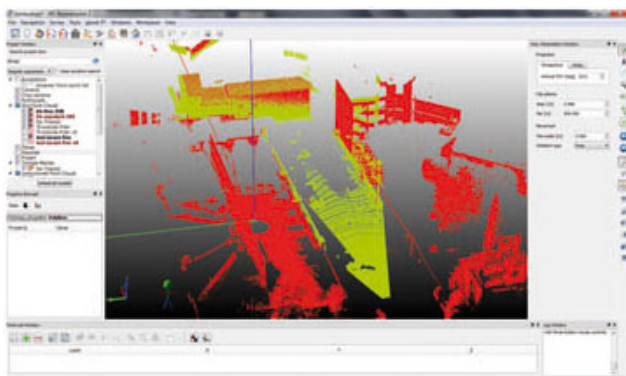
Survey module

The fitting solution to capture, process and analyze 3D data of artefacts acquired with X300 scanner. Elevation, plans, and cross sections, can be extracted. Colored mesh models can be created and fly-through videos recorded.



Construction module

Specifically designed for construction and civil engineering sector the Construction package offer offers user friendly software solution to easily extract from 3D models to CAD features. It provides deformation and displacement maps, calculation of areas and volumes.. Perfect for geo-referencing both in using large format East-North cartographic coordinates systems (i.e. UTM WGS84) and in accordance with external points or targets measured with total station or GNSS.



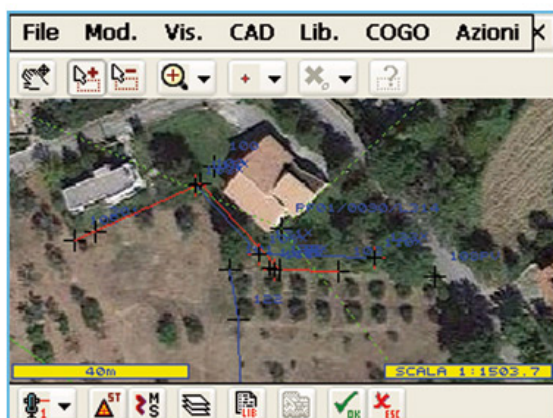
Mining module

Specifically designed for open pit mine, landfill and in general landscape topographical application, the Mining package offers a user friendly software solution for infrastructures and land surveys, mines, landfills, excavations and support to geological analysis and monitoring.

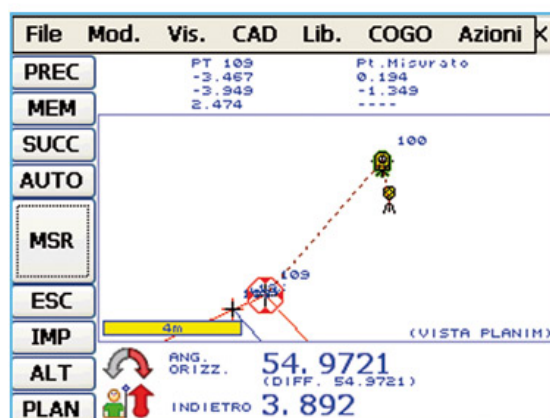
Antas Mobile Software



The Surveying & Mapping field software for R2Win. Available only in Italian version.



RILIEVO CON IMMAGINE RASTER



PICCHETTAMENTO

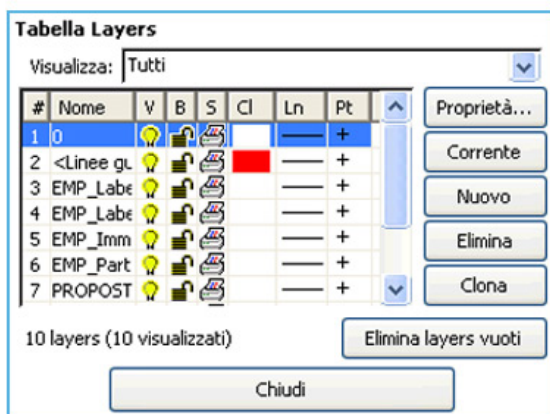
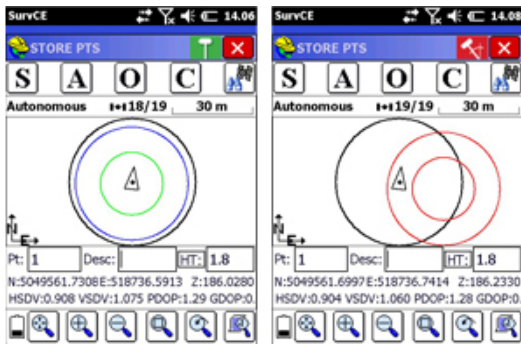


TABELLA LAYERS



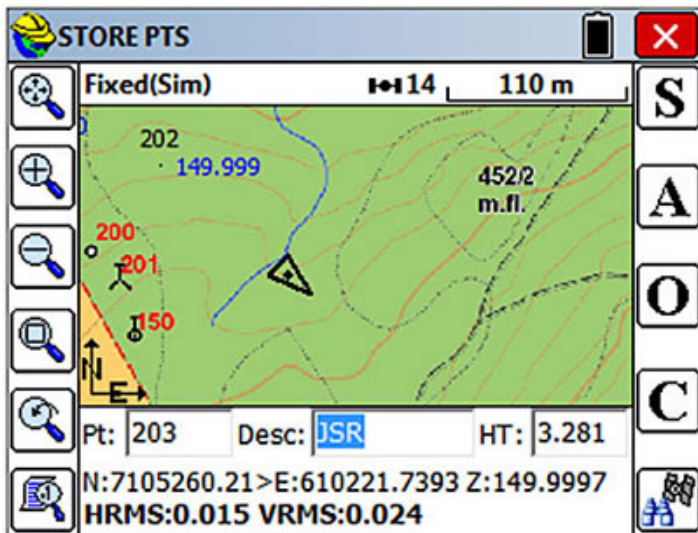
MENU COGO

SurvCe Software



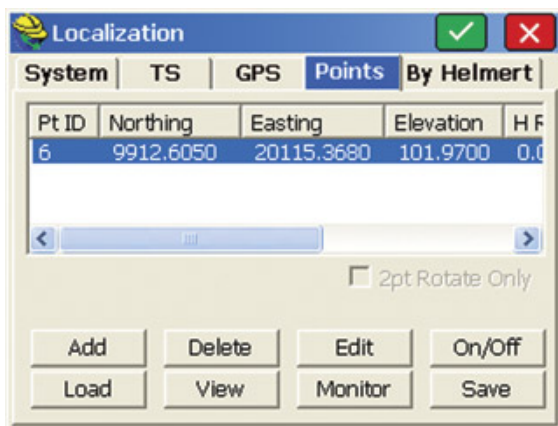
STONEX Surv CE is a customized version of the worldwide well known Carlson Surv CE, dedicated to the STONEX GNSS receivers and Total Stations.

The current Release is mostly dedicated to the advanced features of STONEX S10 GNSS, such as corrections due to tilted measurements and E-Bubble facility. Description



Any Survey work has never been so safe and accurate before the introduction of STONEX S10 used with SURV CE: every point is stored only if the receiver is exactly in the vertical position, no positioning error can accidentally be stored!

Ask to your local STONEX Authorized Dealer for STONEX SURV CE and for the complete suite of Carlson CE licenses for Total Station, Robotic and mechanical, Road stake out and non Stonex GPS.



SurvCE is available in more than two dozen languages. These include: English, Spanish, French, Canadian French, Portuguese, Czech, Dutch, simplified Chinese, Korean, Greek, Italian, Polish, Hungarian, Swedish, Latvian and more.



По вопросам продаж и поддержки обращайтесь:

Архангельск (8182)63-90-72
Брянск (4832)59-03-52
Вологда (8172)26-41-59
Иваново (4932)77-34-06
Калининград (4012)72-03-81
Киров (8332)68-02-04
Курск (4712)77-13-04
Москва (495)268-04-70
Нижний Новгород (831)429-08-12
Орел (4862)44-53-42
Пермь (342)205-81-47
Самара (846)206-03-16
Смоленск (4812)29-41-54
Тверь (4822)63-31-35
Тюмень (3452)66-21-18
Челябинск (351)202-03-61

Астана +7(7172)727-132
Владивосток (423)249-28-31
Воронеж (473)204-51-73
Ижевск (3412)26-03-58
Калуга (4842)92-23-67
Краснодар (861)203-40-90
Липецк (4742)52-20-81
Мурманск (8152)59-64-93
Новокузнецк (3843)20-46-81
Оренбург (3532)37-68-04
Ростов-на-Дону (863)308-18-15
Санкт-Петербург (812)309-46-40
Сочи (862)225-72-31
Томск (3822)98-41-53
Ульяновск (8422)24-23-59
Череповец (8202)49-02-64

Белгород (4722)40-23-64
Волгоград (844)278-03-48
Екатеринбург (343)384-55-89
Казань (843)206-01-48
Кемерово (3842)65-04-62
Красноярск (391)204-63-61
Магнитогорск (3519)55-03-13
Набережные Челны (8552)20-53-41
Новосибирск (383)227-86-73
Пенза (8412)22-31-16
Рязань (4912)46-61-64
Саратов (845)249-38-78
Ставрополь (8652)20-65-13
Тула (4872)74-02-29
Уфа (347)229-48-12
Ярославль (4852)69-52-93

Эл. почта: sxt@nt-rt.ru || Сайт: <http://stonex.nt-rt.ru/>